

VM, 물리적 백업, NAS 백업으로  
안심하지 마십시오. 잘못된 사용하는  
방식에 대해 알아보세요.



Shin Dongun

시스템 엔지니어  
Veeam

# 웨비나 소개



이 웨비나는  
녹화됩니다.



참여시 자동으로 음소거 처리됩니다.

---



질문이 있으면 GTW Q&A, 채팅이나  
손들기 아이콘을 사용하세요.

---



웨비나 후 녹화 영상과 프레젠테이션은 링크로  
공유해 드립니다.



· Veeam이란 무엇인가요?



# Veeam 개요

40만+

14  
년 연속 성장을 달성한  
고객 수

180+

Veeam 지사가 위치한  
국가 수

83%

포춘 500 기업  
중 Veeam 고객 비율

66%

글로벌 2000 기업  
중 Veeam 고객 비율

\$1.12B

2020년 매출(USD)

22%

Y/Y 성장 ARR

회사

ESXi | Hyper-V | AHV

모든 규모에서 성공 보장

- 엔터프라이즈
- SMB
- ROBO 및 Edge
- 워크스테이션



## 제공 서비스

Veeam  
Service Provider Console

## 최신 데이터 보호



Veeam  
ONE



Veeam  
Backup & Replication



Veeam  
DR Orchestrator

## 기본 Veeam 솔루션



클라우드



가상 환경



SaaS



애플리케이션



물리 환경

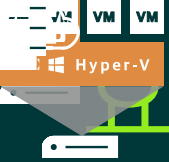


비정형 데이터



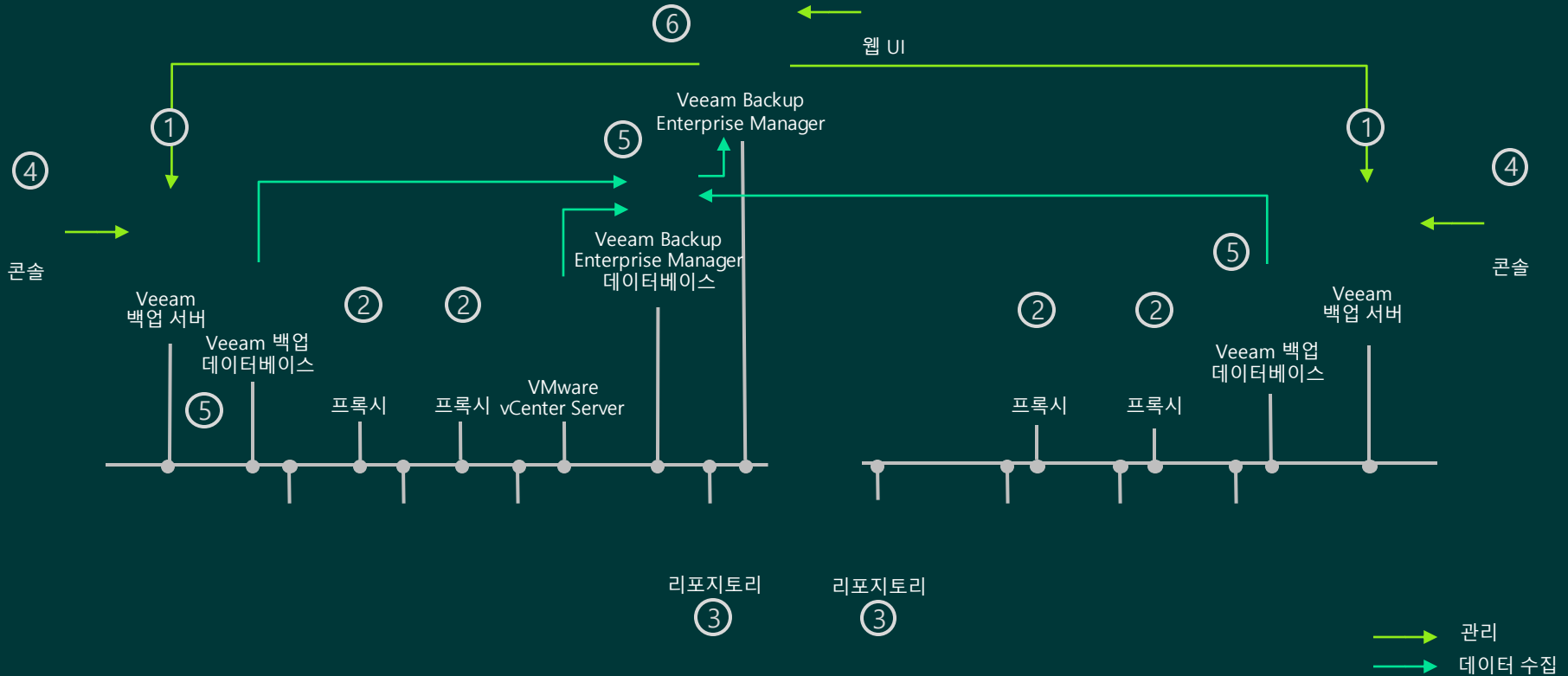


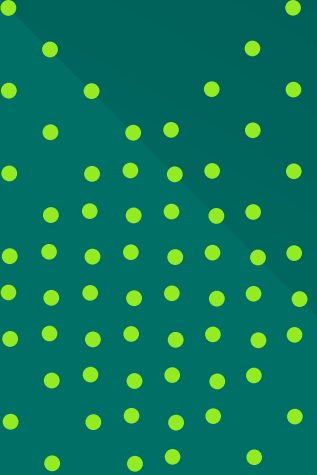
가장 잘못 사용하는 방식을  
공유하는 이유는 무엇인가요?



Hyper-V

# 요약: 주요 Veeam 구성 요소





# 13가지 잘못 사용되는 방식



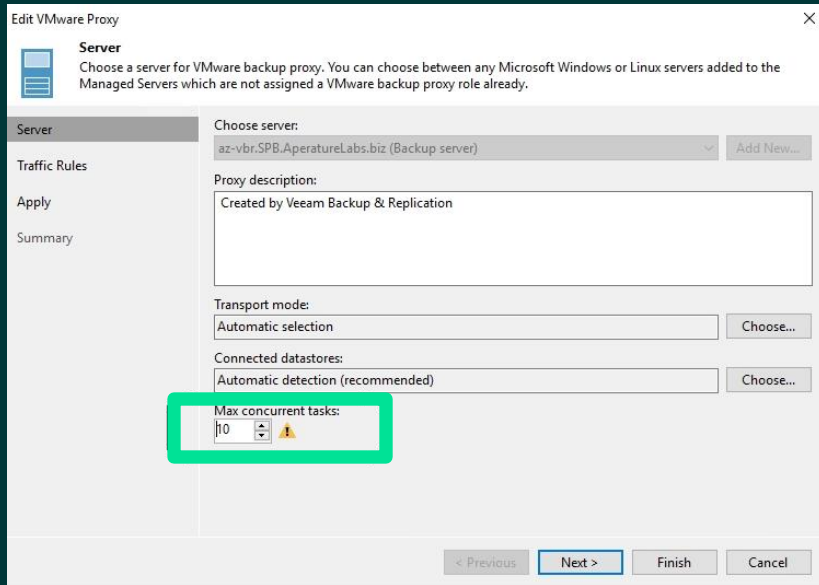


# #1. 인프라 관리

잘못된 사례:  
프록시와 리포지토리에서 동시 작업  
개수 고려하지 않은 환경



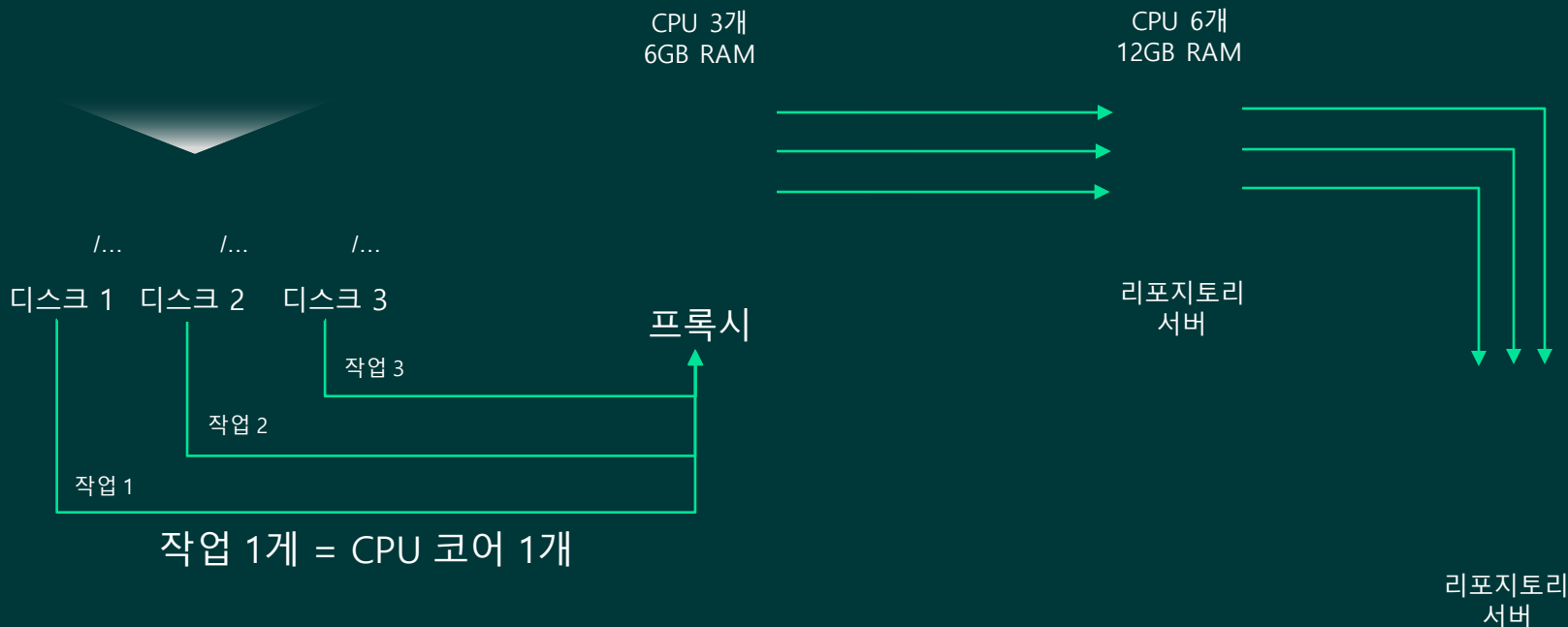
모범 사례:





# 동시 작업 제한

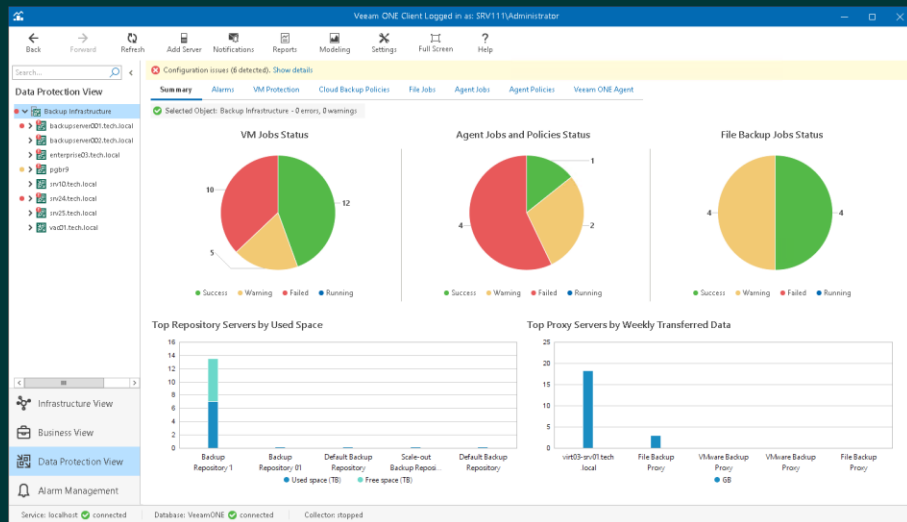
백업 복사 작업에 대해  
백업 리포지토리를 사용하는 경우  
읽기 작업에 대한 작업도 고려해야  
합니다.



# #2. 백업 인프라

잘못된 사례:  
Veeam ONE을 사용하지 않음

모범 사례:



# #3. 스토리지

잘못된 사례:

Windows 리포지토리 대신

Windows 공유 폴더를 CIFS/SMB

공유 리포지토리로 추가

모범 사례:

## Add Backup Repository

Select the type of backup repository you want to add.



### Direct attached storage

Microsoft Windows or Linux server with internal or direct attached storage. This configuration enables data movers to run directly on the server, allowing for fastest performance.



### Network attached storage

Network share on a file server or a NAS device. When backing up to a remote share, we recommend that you select a gateway server located in the same site with the share.



### Deduplicating storage appliance

Dell EMC Data Domain, ExaGrid, HPE StoreOnce or Quantum DXi. If you are unable to meet the requirements of advanced integration via native appliance API, use the network attached storage option instead.



### Object storage

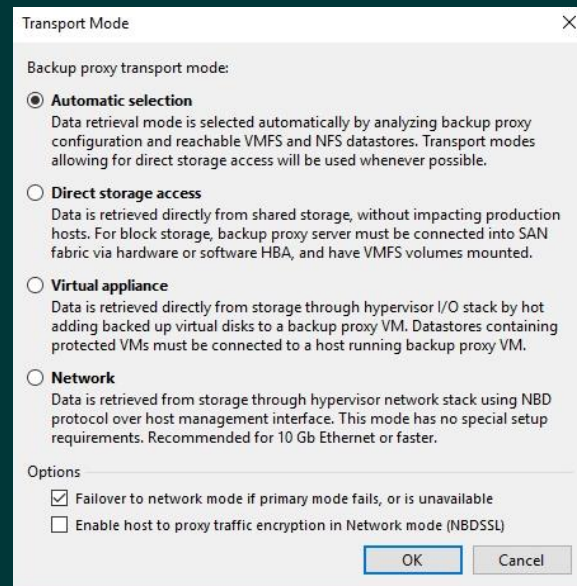
On-prem object storage system or a cloud object storage provider. Object storage can only be used as a Capacity Tier of scale-out backup repositories, backing up directly to object storage is not currently supported.



# #4. 전송 모드

잘못된 사례:  
무작위로 설정된 전송 모드

모범 사례:



# #5. 중복 제거 어플라이언스

잘못된 사례: 중복 제거  
어플라이언스의 첫 번째 사본

모범 사례:

New Backup Copy Job

**Job**  
Backup copy job efficiently creates local and remote copies of your backups, making it easy to maintain multiple copies of your data. Type in a name and description for the job, and specify backup copy interval.

**Job**

Name:  
Backup Copy Job 1

Description:  
Created by SPB\absent at 6/9/2021 6:49 AM.

Copy mode:

Immediate copy (mirroring)  
Copies every restore point as soon as it appears in the primary backup repository. This mode will copy all backups created by selected backup jobs, including transaction log backups.

Periodic copy (pruning)  
Periodically copies the latest available restore point only. This mode also allows for selecting which backups to process, enabling you to further reduce bandwidth usage.

< Previous   **Next >**   Finish   Cancel

[https://bp.veeam.com/vbr/VBP/3\\_Build\\_structures/B\\_Veeam\\_Components/B\\_backup\\_repositories/deduplication.html](https://bp.veeam.com/vbr/VBP/3_Build_structures/B_Veeam_Components/B_backup_repositories/deduplication.html)

# #6. 데이터 관리 101

잘못된 사례: 동일한 리포지토리에서 소스 백업과 백업 사본 모두 찾기

모범 사례:

## Add Backup Repository

Select the type of backup repository you want to add.



### Direct attached storage

Microsoft Windows or Linux server with internal or direct attached storage. This configuration enables data movers to run directly on the server, allowing for fastest performance.



### Network attached storage

Network share on a file server or a NAS device. When backing up to a remote share, we recommend that you select a gateway server located in the same site with the share.



### Deduplicating storage appliance

Dell EMC Data Domain, ExaGrid, HPE StoreOnce or Quantum DXi. If you are unable to meet the requirements of advanced integration via native appliance API, use the network attached storage option instead.



### Object storage

On-prem object storage system or a cloud object storage provider. Object storage can only be used as a Capacity Tier of scale-out backup repositories, backing up directly to object storage is not currently supported.

(SOBR)

# veeam

# READY



Repository

용량 계층

아카이브 계층

S3 호환

Amazon S3

Amazon S3 Glacier

VM 개체 스토리지

Microsoft Azure Blob Storage

Microsoft Azure Archive Blob Storage

Google Cloud Platform



# #7. 데이터 중복 없음

잘못된 사례: 3-2-1-1-0 규칙도 아닌 3-2-1  
규칙을 따르지 않음 **모범 사례:**



데이터 복사본



서로 다른 미디어



오프사이트 복사본



반드시 물리적으로  
격리되거나 변경 불가능한  
오프라인에 있어야 하는  
복사본



백업 복구력  
검증 후 오류 없음











# #8. 스토리지 활용

잘못된 사례: 스토리지 통합 방법은 스토리지의 특성을 따라야 합니다.

## 모범 사례:

Create true backups and VM replicas with little to no impact on your production environment utilizing storage snapshots from supported vendors that leverage Veeam's Universal Storage API.

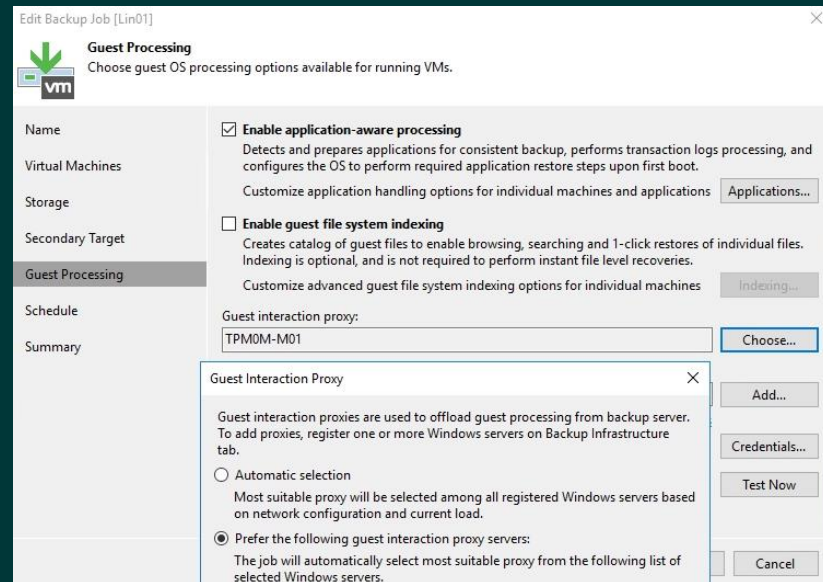
- + DataCore Plug-In for Veeam Backup & Replication 
- + Dell EMC SC Compellent Plug-In for Veeam Backup & Replication 
- + Fujitsu Plug-In for Veeam Backup & Replication 
- + Huawei Plug-In for Veeam Backup & Replication 
- + INFINIDAT Plug-In for Veeam Backup & Replication 
- + NetApp Element Plug-In for Veeam Backup & Replication (for HCI/SolidFire storage) 
- + Pure Storage Plug-In for Veeam Backup & Replication 
- + Tintri IntelliFlash Plug-In for Veeam Backup & Replication (formerly Western Digital, Tegile) 



# #9. 게이트웨이 서버

잘못된 사례: 게이트웨이 서버가 WAN을 통해 자동으로 공유하도록 설정되었습니다.

모범 사례:





# #10. VBR 서버 리소스

잘못된 사례:  
충분한 리소스가 주어지지  
않았습니다.

모범 사례:

VSE v4.0 Dashboard Workloads Object Details Info

Excel PDF

### Management Requirements (Incremental)

Follow link to best practice on each row

Role	Cores	RAM (GB)
VBR	4	8
SQL	2	4
Enterprise Manager	5	10

### Repository Capacities (TB)

These figures include both backup and backup copy data.

Site	Capacity (TB)
Site_A	24.53
Site_B	24.53

### Per-Site Proxy and Repository Total Requirements

These are the raw requirements for each role for each site based on the incremental backup.

Site	Role	Cores	RAM (GB)
Site_A	Proxy	4	8
Site_A	Repository	2	10
Site_B	Proxy	0	0
Site_B	Repository	2	9

# Veeam 크기 조정 팁

1

“설계자의 책상: Veeam Backup & Replication, 프록시 및 리포지토리 크기 조정”:  
<https://www.veeamon.com/sessions/amers>

2

모범 사례 가이드 참조 -> [veeam.com](https://veeam.com)  
Veeam 사이징 예측 도구(VSE) 포함 <https://vse.veeam.com>

3

리포지토리 사이징 조정 -> <https://rps.dewin.me>

4

기반 인프라를 이해해야 필요한 리소스 양을 정확하게 측정할 수 있습니다.



# #11. WAN 가속기

잘못된 사례:  
+1Gb 링크에서 WAN 가속기 설정

모범 사례:

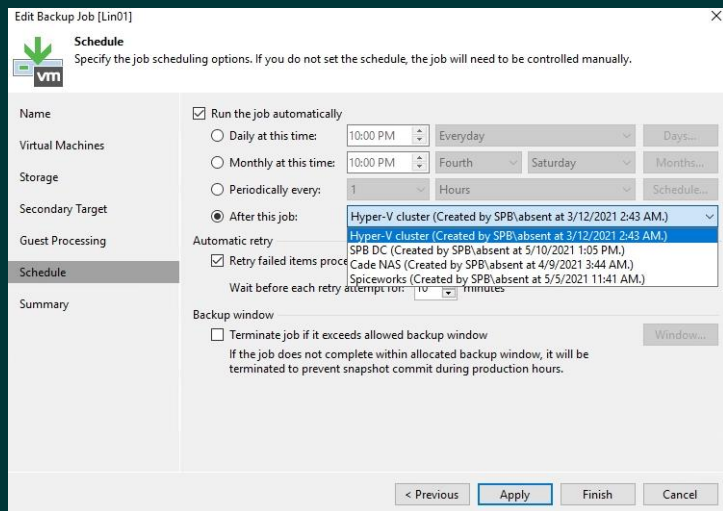
대역폭	모드
1-100Mb/s	낮은 대역폭
100Mb/s – 1Gb/s	높은 대역폭
> 1Gb/s	직접

# #12. 작업 연결

잘못된 사례:  
3개 이상의 작업에 연결되었습니다.

모범 사례:

- 백업 윈도우 개선 계획
- 보다 스마트한 예약
- 튜닝 성능



# #13. 업그레이드

잘못된 사례:  
"설명 없이 그냥 제공"



모범 사례:

## Upgrading to Veeam Backup & Replication 11

To perform upgrade of Veeam Backup & Replication to version 11, you must be running version 9.5 Update 4b (build 9.5.4.2866) or later on the supported operating system (refer to the [System Requirements](#) section of this document).

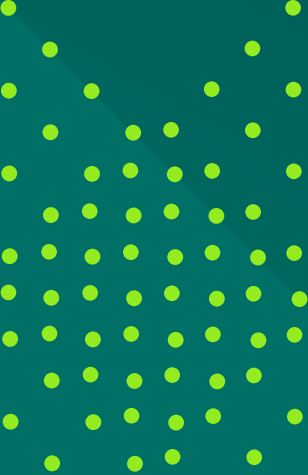
### Upgrade Checklist

Check the following prerequisites before you upgrade Veeam Backup & Replication:

1. Veeam Backup & Replication 11 uses the same license file format introduced with version 10, so you can use your existing version 10 license file to install version 11 or any future versions. You must ensure that you have the correct license file for the version you are upgrading to.
2. Are you using Veeam Backup Starter? This edition has been discontinued, so Veeam Backup & Replication 11 will not accept such a license file. Please download a replacement license file from [Veeam Support](#).
3. Are you using Cloud Connect? If yes, check with your Cloud Connect service provider if they have already upgraded their system to at least the version you are upgrading to.
4. Are you using Veeam Availability Orchestrator 3.0 or earlier? Veeam Backup & Replication 11 is not compatible with these versions. Upgrade to Veeam Availability Orchestrator 4.0 before upgrading to Veeam Backup & Replication 11.
5. Are you using Veeam Backup Enterprise Manager? If yes, start the upgrade procedure with this component. Note that Enterprise Manager 11 supports backup servers version 9.5 Update 4 or later.
6. Are you using Veeam ONE to monitor your backup infrastructure? If yes, upgrade it first. Veeam ONE supports monitoring of backup servers version 9.5 Update 4 or later.
7. Are you using Veeam Backup Enterprise Manager server added to Veeam ONE? If yes, first upgrade Veeam ONE, second upgrade Veeam Backup Enterprise Manager, third upgrade Veeam Backup & Replication.
8. Are you using Veeam Backup & Replication within the infrastructure of Nutanix vCenter version 2.0.1 or earlier? If yes, it is not recommended to manually upgrade to Veeam Backup & Replication 11. Upgrade to Veeam Backup & Replication 11 after upgrading Nutanix vCenter to version 2.0.2 or later.
9. Are you using Veeam Plug-in for Oracle RMAN or Veeam Plug-in for SAP HANA? If yes, you must upgrade Veeam Backup & Replication first, then you can upgrade Veeam Plug-ins. Veeam Backup & Replication 11 supports Veeam Plug-in for Oracle RMAN version 11.0.0 and Veeam Plug-in for SAP HANA version 11.0.0.
10. Check if the backup server to be upgraded is installed on the supported operating system version according to [System Requirements](#). If it is not, create a configuration backup, install Veeam Backup & Replication 11 on the supported operating system version, and then upgrade the backup server to version 11.
11. Make sure that other servers that you plan to use as backup infrastructure components meet the system requirements listed in the [System Requirements](#) section of this document.
12. Make sure that the virtual environment you are going to protect with Veeam Backup & Replication meets the requirements listed in the [Platform Support](#) section of this document.
13. Ensure there are no active processes, such as any running jobs and restore sessions. We recommend that you do not stop running jobs and let them complete successfully. Disable any periodic backup jobs before upgrading.

<http://vee.am/V11UpgradeGuide>



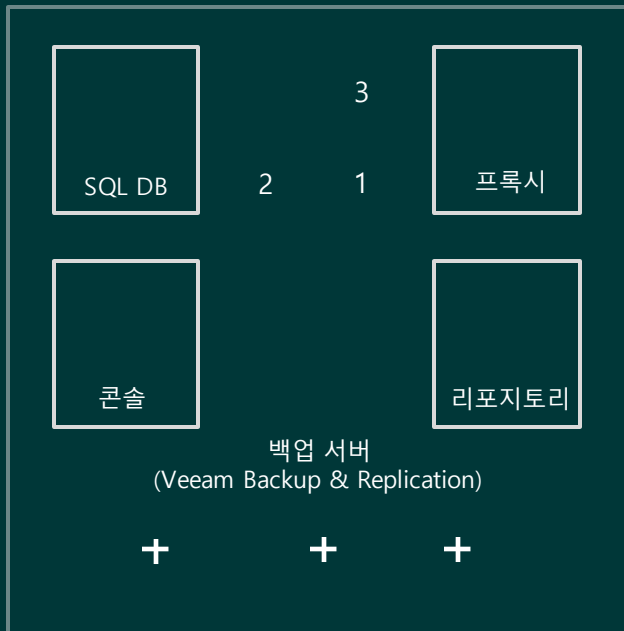


보너스

# 보너스 #1: 구성 요소

구성 요소 배치 — 상황에 따라!

수동으로 선택한 프록시 배치






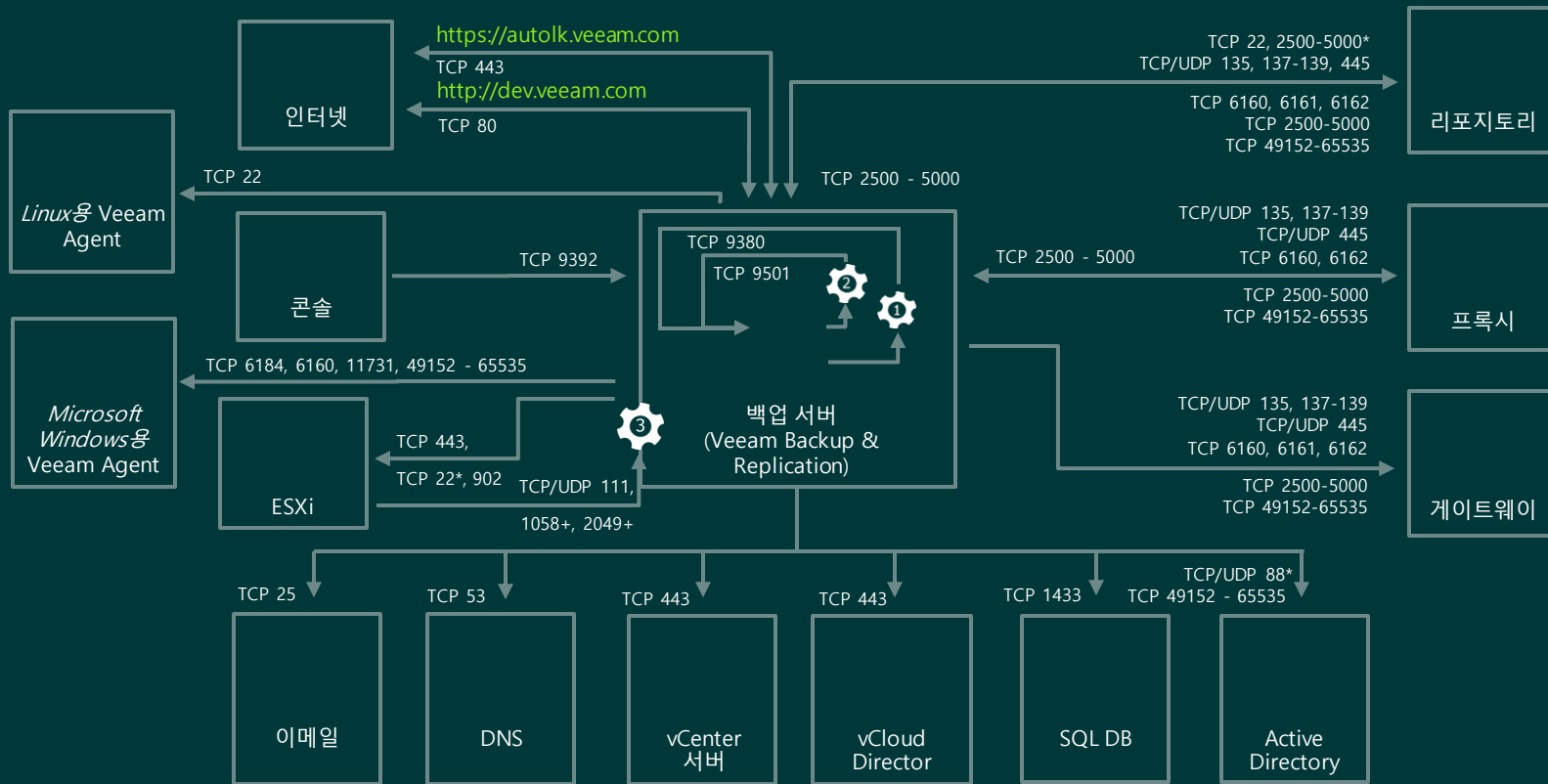
수평 확장  
백업 리포지토리

- 1 Veeam 분배 서비스
- 2 Veeam 브로커 서비스
- 3 Veeam vPower NFS 서비스



# 보너스 #2: 보안

-  Veeam 분배 서비스
-  Veeam 브로커 서비스
-  Veeam vPower NFS 서비스



# 강화된 IT로 한계를 뛰어넘는 Veeam Backup & Replication v11



CDP(지속적  
데이터 보호)



신뢰할 수 있는  
랜섬웨어 보호



Amazon S3  
Glacier 및 Azure  
Archive



확대된  
즉시 복구



Veeam으로  
강화하는 BaaS 및  
DRaaS

# 현재 사용 가능한 리소스

Veeam Backup & Replication 무료 평가판:

<https://www.veeam.com/vm-backup-recovery-replication-software.html>

Veeam Backup & Replication Community Edition:

<https://www.veeam.com/virtual-machine-backup-solution-free.html>



# 질문과 답변



감사합니다.

veeam