

Nutanix Mine with VEEAM

Make backup infrastructure invisible and effortless by leveraging Nutanix HCI technology for dedicated data backup, recovery, and archival

AT A GLANCE

Nutanix Mine with Veeam is a comprehensive data protection and cloud data management solution that includes all the hardware and software components required to support any virtualized or legacy environment. It enables granular data recovery for mission critical applications and provides a path to longer-term data retention with Nutanix Objects, Veeam Cloud Tier, tape media and much more.



“Our testing of Nutanix Mine with Veeam shows significant performance improvements over our current environment. Proven scalability, and the flexibility to grow with our increasing business needs, is critical for us. This ensures we have the right backup and disaster recovery infrastructure in place protecting our data on a consistent and reliable basis.”

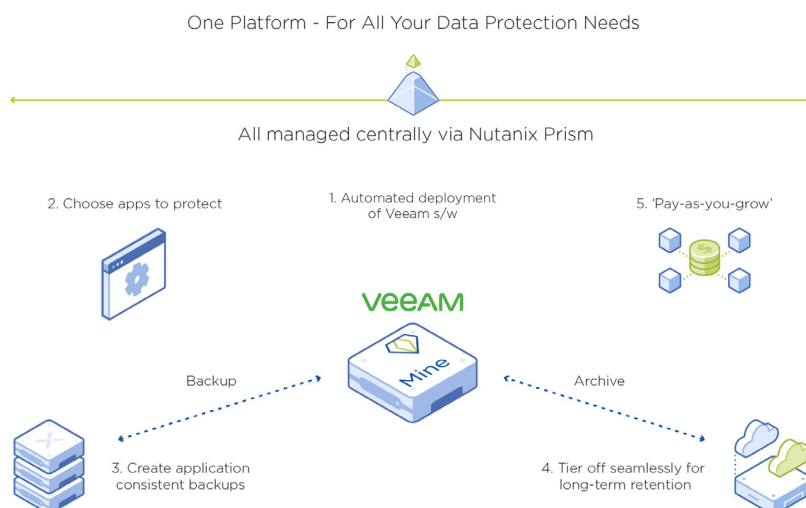
– Sean Gilliam, Ameritas

CUSTOMER CHALLENGES

Customers are modernizing their datacenters with hyperconverged infrastructure for greater simplicity, performance, and scalability. However, as their infrastructure evolves, often their backup and data protection strategies don't, and they're left dealing with legacy backup solutions that weren't designed to meet modern requirements. Lack of control over data and backup leads to, lost data, long and complex recovery, application unavailability, and missed service level agreements (SLAs). Nutanix Mine with Veeam brings simplicity and scale of **HCI** and Veeam Backup and Replication™ to address customers' Data Protection and Cloud Data Management needs.

SOLUTION OVERVIEW

Nutanix Mine with Veeam blends innovative technology from leaders in the space, allowing you to experience top-notch Cloud Data Management on an industry-leading enterprise cloud platform. The result is a full-stack solution with fast time to value, enabling you to quickly go from project planning to a complete data management solution, without the cost and overhead of standalone systems.



CUSTOMER BENEFITS

The benefits of the solution are:

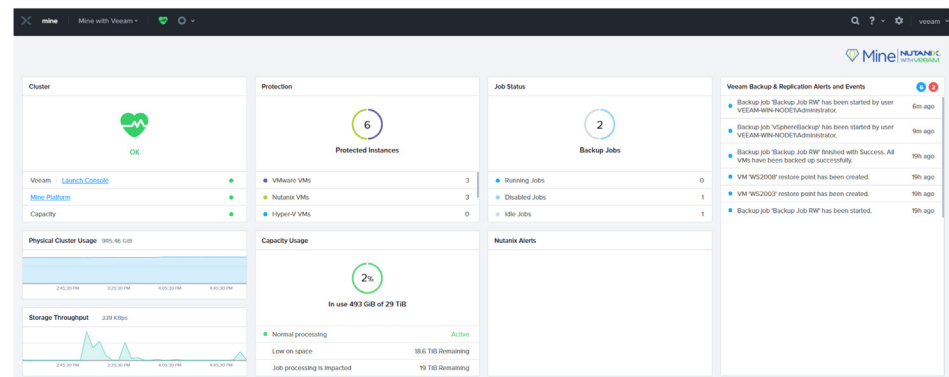
- **Faster time-to-value**
Simplify customer experience for sizing, ordering, deploying, managing and scaling.
- **High Availability**
HCI architecture delivers sustained uptime for data protection in the event of service and node failures.
- **Unified IT operations**
Integrate operations from deployment to day-to-day data management.
- **Drop in, scale out**
Expand your existing data protection environment to scale with the business without any disruption.
- **Security**
Nutanix Objects with immutability support can provide a safeguard against ransomware and other malware threats

WHAT TO EXPECT: COMPLETE DATA PROTECTION AND MANAGEMENT

Nutanix Mine with Veeam is a self-contained, dedicated secondary storage solution designed to protect both your Nutanix and your legacy IT environment. It combines the hyperconverged and secured platform pioneered by Nutanix with the advanced functionality of **Veeam Backup & Replication™**. Nutanix Mine with Veeam fits naturally into a Nutanix-based infrastructure, with its cloud tiering capabilities working seamlessly with Nutanix Objects. It is delivered with industry-leading “pay as you grow” subscription licensing, providing you with the flexibility to start small and grow as needed.

SIMPLIFIED MANAGEMENT

Through tight Veeam integration with the Nutanix HCI data fabric and the advanced **Prism** management console, IT managers can now get a unified view to monitor and manage their HCI infrastructure and data protection environment, consistent across primary, secondary, and tertiary locations in a Nutanix-first deployment.



SIMPLIFIED CONFIGURATIONS

Nutanix and Veeam remove guesswork when it comes to sizing and configurations. The solution is offered in multiple “right-sized” form factors optimized for performance. You can start off with the extra-small system that is specifically designed to support up to 125 VMs, all the way to the large that supports over to 1000 VMs. At any time, if you want to scale beyond the starting systems, you can do so by seamlessly inserting add-on systems to a maximum of eight nodes. In this way, you can non-disruptively scale your data protection solution to meet your growing business needs.

Nutanix Mine - Hardware Configurations



	XSmall Nutanix 1465 G7	Small Nutanix 1465 G7	Medium Nutanix 8235 G7 x2	Scale-out Nutanix 8235 G7 x1
Rack Size	2U	2U	4U	2U
# of Nodes	4	4	4	2
Processor (per node)	2x Intel Xeon Silver 4210 (10-core 2.2 GHz)	2x Intel Xeon Silver 4210 (10-core 2.2 GHz)	2x Intel Xeon Silver 4214 (12-core 2.2 GHz)	2x Intel Xeon Silver 4214 (12-core 2.2 GHz)
RAM (per node)	192 GB	192 GB	192 GB	192 GB
SSD (per node)	1x 1.92 TB	1x 1.92 TB	2x 1.92 TB	2x 1.92 TB
HDD (per node)	2x 6 TB	2x 12 TB	4x 12 TB	4x 12 TB
Networking (per node)	2 or 4x 10 GbE	2 or 4x 10 GbE	2 or 4x 10 GbE or 2x 25 / 40 GbE	2 or 4x 10 GbE or 2x 25 / 40 GbE
Raw Capacity	48 TB	96 TB	192 TB	96 TB
Effective Capacity	30-50 TB	60-100 TB	120-200 TB	60-100 TB
Veeam Licenses Included	0	250	500	250

SIMPLIFIED CUSTOMER EXPERIENCE

Nutanix and Veeam have radically simplified the end-to-end customer experience by streamlining all the steps – from sizing your backup environment to providing joint customer support.



Size:



Procure



Deploy



Use



Scale



Support

- **Size:** Veeam sizing has been integrated into the Nutanix Sizer tool. Veeam software configuration and services will be optimized for the solution depending on the size of the backup deployment you choose.
- **Procure:** Nutanix Mine with Veeam is available as a turnkey solution procured as a single SKU. No manual assembly of piece parts is required. Just answer a few simple questions and we'll configure a secondary storage solution that is right for your business needs.
- **Deploy:** Once you receive the pre-packaged solution, simply rack & stack the solution and run an automated installation program (Foundation for Mine) to install both Nutanix and the Veeam software. Go from “power on” to configuring backup jobs in a matter of hours – not days or weeks.
- **Use:** Nutanix Mine with Veeam is tightly integrated with the advanced Prism management console. Get visibility and actionable insights across your production and backup environments, from within Nutanix Prism, a single pane of glass for monitoring and managing the health of your production workloads, backup jobs, and underlying backup storage.
- **Scale:** As the backup environment grows and needs to be extended, Nutanix Mine with Veeam offers a seamless scale-out process. We provide a scale-out option to easily add additional expansion nodes to protect more VMs non-disruptively into your existing Nutanix Mine with Veeam deployment.
- **Support:** Nutanix and Veeam have established a seamless program to handle support cases and escalate issues in a timely manner. Feel free to call either Nutanix or Veeam should you have a problem; we'll handle the rest!

BACKUP MADE INVISIBLE AND EFFORTLESS

Nutanix Mine with Veeam makes integrated data protection and cloud data management easy, providing performance, web-scalability, and intuitive backup simplicity. Discover a turn-key solution that delivers fast time-to-value, unified IT operations, and the ability to easily drop-in and scale up/scale out to meet the needs of today's modern data center.



T. 855.NUTANIX (855.688.2649) | F. 408.916.4039
info@nutanix.com | www.nutanix.com | [@nutanix](https://twitter.com/nutanix)

©2021 Nutanix, Inc. All rights reserved. Nutanix, the Nutanix logo and all product and service names mentioned herein are registered trademarks or trademarks of Nutanix, Inc. in the United States and other countries. All other brand names mentioned herein are for identification purposes only and may be the trademarks of their respective holder(s).